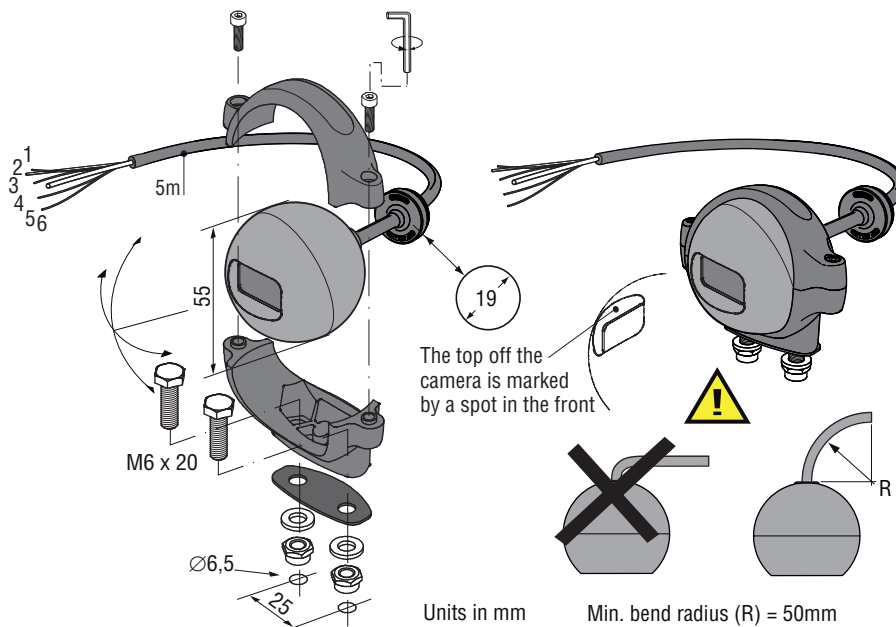


Vision is  
 our mission®

# Product Data



## Dimensions



# TECHNICAL DATA

## Compact Camera CCC Ex \*° PAL/NTSC Zone 2

Zone 2

	<b>Description</b>						
Article number PAL	0194000	0194010	0194020	0194030	0194040	0194050	0194060
Article number NTSC	0194070	0194080	0194090	0194100	0194110	0194120	0194130
Horizontal angle	81°	70°	52°	44°	33°	23°	12°
Vertical angle	61°	53°	39°	33°	25°	11°	9°

	<b>Sensor</b>
CCD	1/4 inch CCD Image sensor.
CCD total pixels	PAL: 795(H) x 596(V), NTSC: 811(H) x 508(V).
Minimum illumination	1,5 Lux (F1.2, 5600°K).
Resolution	470 TVL / 580 TVL (Enhanced).
S/N ratio	52dB ( MIN ) / 60dB ( TYP ) (AGC OFF).
Video output	1,0V p-p composite video at 75 Ohm.
Gamma correction	0,45
Gain control	AGC
White balance	ATW/AWC/Fix (zero color rolling).
White balance range	AWB, ATW(3200-10.000°K)/fix(3200°K).
Mirror function	REV./ NOR. Switchable via orange wire connected to 12V/DC.



	<b>Electrical</b>
Power	12V/DC +/-10%, consumption 250mA heating on, 85mA heating off. Camera must be connected to a fuse 250 mA slow blow. The breaking capacity of the fuse must be in accordance with the prospective short circuit current of the supply.
Cable	Art. no 1220110, metric marker. 5,0 meters (+/-0,04m), the cable shall be fixed mounted.

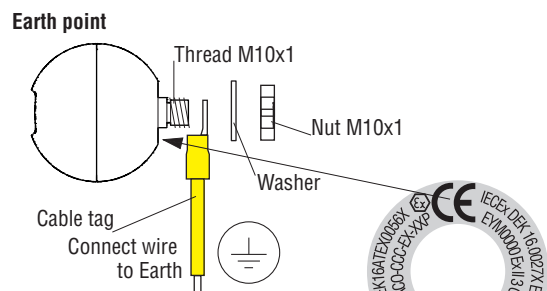
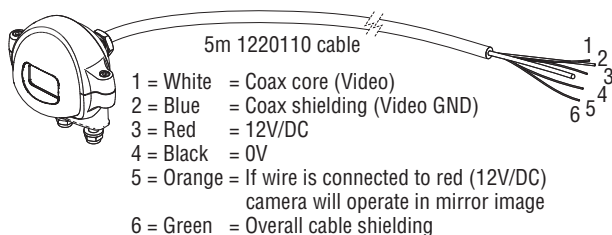
	<b>Mechanical</b>
Shock constancy	Shock and vibration resistant for usage on offshore platform.
Weight	0,44 kg, without cable.
Lensglass	Chemically hardened, toughened, tempered floatglass, 5 to 7 times stronger than ordinary glass.
Housing	Stainless steel 316L, IP68 according to IEC 60529. IP69K according EN 40050-9.
Camera bracket	Camera bracket is made of glass reinforced polyamide, survives torque test: 50 Nm at -40°C...+75°C.
Ambient temperature	T4;-40°C<+75°C, T5;-40°C<+50°C, T6;-40°C<+35°C.

	<b>Certification</b>
Approvals	EN 60079-18: 2009, EN 60079-0: 2009. Cable is designed according UL Style 20549.
Certificates	ATEX Certificate: DEKRA 16ATEX0056X Iss. 0. IECEx Certificate of Conformity: IECEx DEK 16.0027X iss. 0.
Green Passport	All materials are compliant to Green Passport requirements according IMO resolution MEPC.197(62) as adopted on 15 July 2011 (Maritime sector:International Maritime Organization concerning the functions of the Marine Environment Protection Committee)

	<b>Ex Specifications</b>
	Ex II 3 G Ex mc IIC T6/T5/T4 Gc.
	Ex II 3 D Ex mc IIIC T85/100/125°C Dc.

### Electrical connection

How to connect the camera



**NOTE:** The free end of the permanently connected, unterminated cable is to be connected in an appropriate way, e.g. with the Orlaco Junction box Ex.  
**Date/serial number marking** see camera label: EYMXXXX  
**E** = Prefix = Ex  
**Y** = Year; 1st digit: 2016 = G,  
**M** = Month; 2nd digit: January = A.  
**X** = Follow-up number, restarted every month; 4 digits (Letters and/or numbers).

All data subject to change without notice. All dimensions are for commercial purpose only.  
 The camera/display systems from Orlaco comply with the latest CE, ADR, EMC and mirror-directive regulations, where applicable.  
 All products are manufactured in accordance with the ISO 9001 quality management system, ISO/TS 16949 quality automotive, ISO 14001 environmental management systems and all Ex products with the IECEx scheme and ATEX directives, where applicable.





## EU declaration of conformity

In accordance to annex X of the European directive 2014/34/EU (as last amended).


Manufacturer:

**Orlaco Products B.V.**  
 Albert Plesmanstraat 42,  
 3772 MN Barneveld  
 The Netherlands

Description of the equipment, protective system, or device referred to:  
 Camera series **Compact Camera, Model Type CCC Ex PAL/NTSC Zone 2**

All relevant provisions fulfilled by the equipment, protective system, or device referred to in Article 1:

Equipment group II intended for use in potentially explosive atmospheres  
 With the following marking:

 **II 3 G Ex mc IIC T6/T5/T4 Gc**  
**II 3 D Ex mc IIIC T85/100/125 °C Dc**

EC-Type Examination Certificate Number: **DEKRA 16ATEX0056 X**

Notified Body that has conducted the EC-type examination:

**DEKRA Certification B.V. CE0344**  
 Meander 1051  
 6825 MJ Arnhem  
 The Netherlands

Reference to the harmonized standards:

**EN 60079-0: 2009, EN 60079-18: 2009,**

Signed by on behalf of the manufacturer:

Name : **Henrie G. van Beusekom**  
 Title : **Executive Director**  
 Place and date of issue : **Barneveld, October 5<sup>th</sup>, 2016**

All data subject to change without notice. All dimensions are for commercial purpose only.

The camera/display systems from Orlaco comply with the latest CE, ADR, EMC and mirror-directive regulations, where applicable.

All products are manufactured in accordance with the ISO 9001 quality management system, ISO/TS 16949 quality automotive, ISO 14001 environmental management systems and all Ex products with the IECEx scheme and ATEX directives, where applicable.